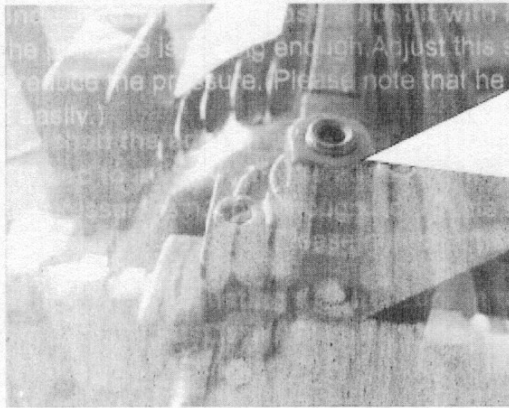


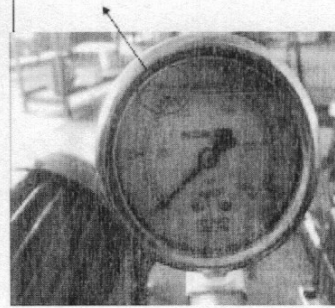
2. We have finished the adjusting the pressure of the machine before sending the goods .When you indeed to adjust it please adjust it with help of technician.

Pressure:If the pressure is not big enough,Adjust this screw, clockwise to increase the pressure, anti-clockwise to reduce the pressure.(Please note that he pressure dial scale won't beyond 40, otherwise it will broken easily.)



Adjust this screw, clockwise to increase the pressure, anti-clockwise to reduce the pressure.

But please make sure the pressure dial scale won't beyond 40, otherwise it will broken easily.



2.Time:When the seted time finish,but the bottom plate doesn't return to the bottom .

- 1)Check the oil pressure if it is normal.
- 2)Check the electric wire if it get damage.

3.Temperature:When the seted time finish, and the machine's indication light is bright,but the heating plate is not hot,please check the circuit.

Welcome each wholesaler enquiry various press technical information.